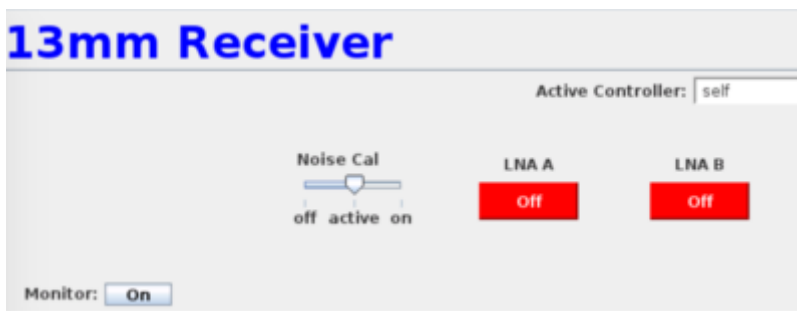


Parkes Receiver Setup

13mm (22 GHz)

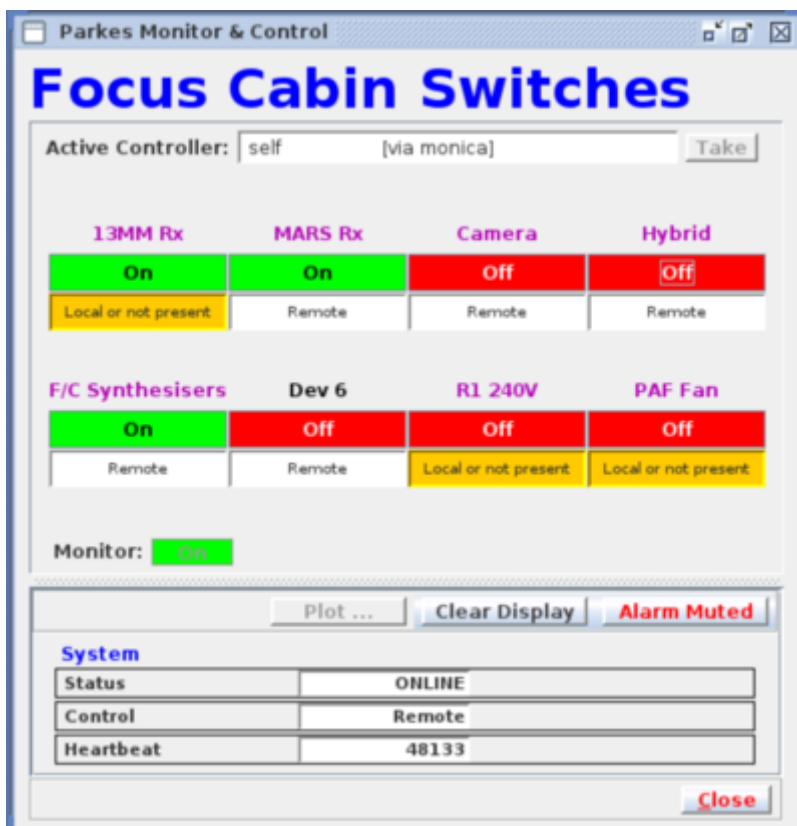
In PMCC click on the "Focus Cabin Switches". Make sure "13MM Rx" and "F/C Synthesisers" are both on - see below. If F/C Synthesisers are not on, wait ~ 1min before trying to set any of the LOs.

In PMCC "show" the 13mm Rx settings. Ensure LNA "A" and "B" and on and Noisecal is "active".



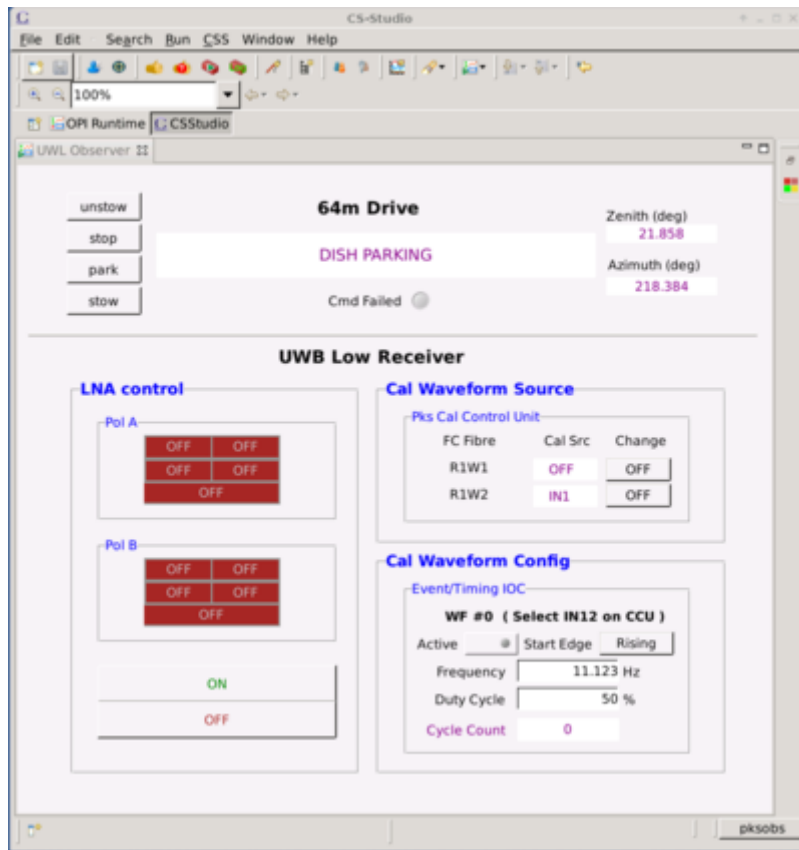
MARS (8.4 GHz)

In PMCC click on the "Focus Cabin Switches". Make sure "MARS Rx" and "F/C Synthesisers" are both on. (If F/C Synthesisers are not on, wait ~ 1min before trying to set any of the LOs).



UWB-Low (700 MHz -- 4 GHz)

Do something to get the following window up. Click ON (bottom left of window) to enable LNA. Turn off again when finished.



From:

<http://www.atnf.csiro.au/vlbi/dokuwiki/> - **ATNF VLBI Wiki**

Permanent link:

<http://www.atnf.csiro.au/vlbi/dokuwiki/doku.php/lbaops/parkesrx>

Last update: **2018/12/09 21:41**

