

Parkes Receiver Setup

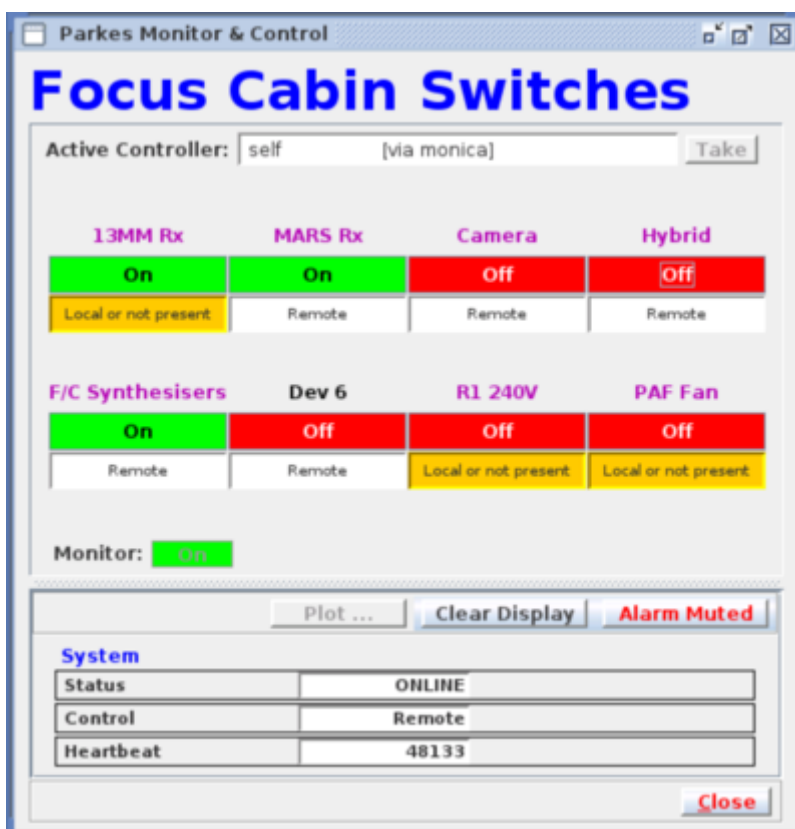
13mm (22 GHz)

In PMCC click on the "Focus Cabin Switches". Make sure "13MM Rx" and "F/C Synthesisers" are both on. (If F/C Synthesisers are not on, wait ~ 1min before trying to set any of the LOs).

In PMCC "show" the 13mm Rx settings. Ensure LNA "A" and "B" and on and Noisecal is "active".

MARS (8.4 GHz)

In PMCC click on the "Focus Cabin Switches". Make sure "MARS Rx" and "F/C Synthesisers" are both on. (If F/C Synthesisers are not on, wait ~ 1min before trying to set any of the LOs).



From: <http://www.atnf.csiro.au/vlbi/dokuwiki/> - **ATNF VLBI Wiki**

Permanent link: <http://www.atnf.csiro.au/vlbi/dokuwiki/doku.php/lbaops/parkesrx?rev=1536132545>

Last update: **2018/09/05 17:29**

