



Parkes ATUC Report
April 2002

Parkes staff changes

- Deputy O-i-C

Lewis Ball short term appointment

indefinite appointment to made soon

Tim Ruckley - electronics

Louise Munday – Admin /front-desk

Margaret Glowacki (left Jan 2002)

Parke observing statistics

(full year 2001)

- 82.0% Scheduled observing
 - (includes 6.4% VLBI)
- 18.0% Maintenance/tests/shutdown

Parkes downtime statistics

(year 2001)

- 1.4% equipment faults
(worst single fault 0.5% - X-band receiver failure)
- 2.8% weather (unusually high winds)
- > 1% RFI

Parkes observer feedback

Year 2001 (since last ATUC)

- 32 (9) responses (WWW form)
- Extreme scores
 - 9.2 (9.1) Admin
 - 9.1 (9.2) Tech support (in/out of normal hours)
 -
 - 7.6 (7.4) Documentation
 - 6.7 (6.6) RFI (freedom from)
 - 7.7 (6.6) Online software
 - 8.8 (8.1) Grand average

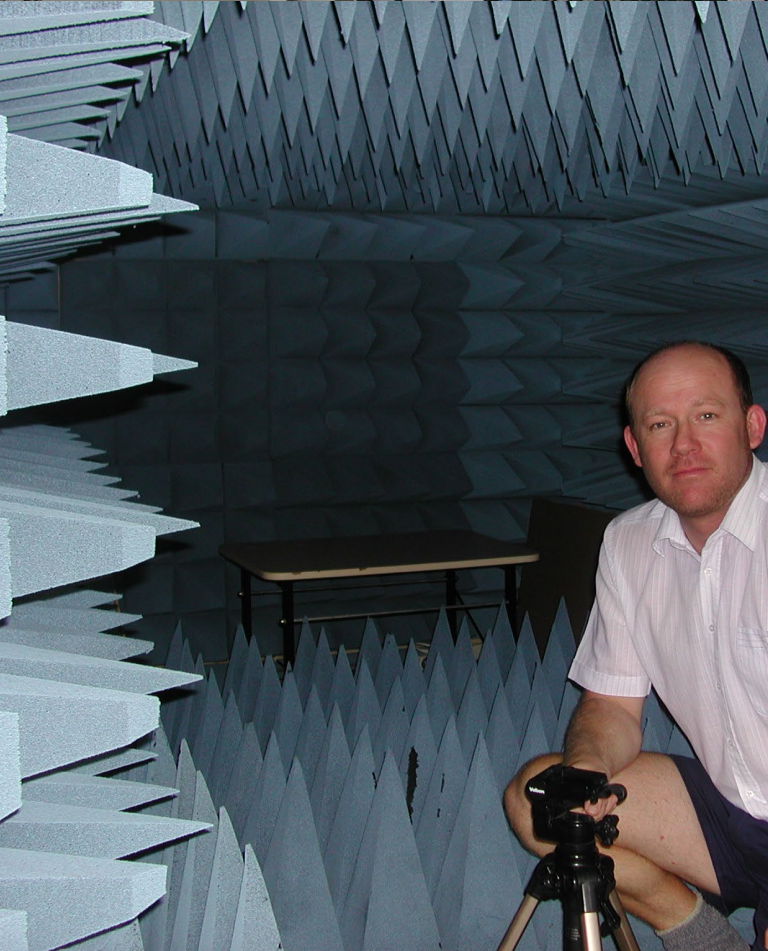
Recent Parkes highlights



keys

ete (March)

- Binary pulsar J1740-5340 result



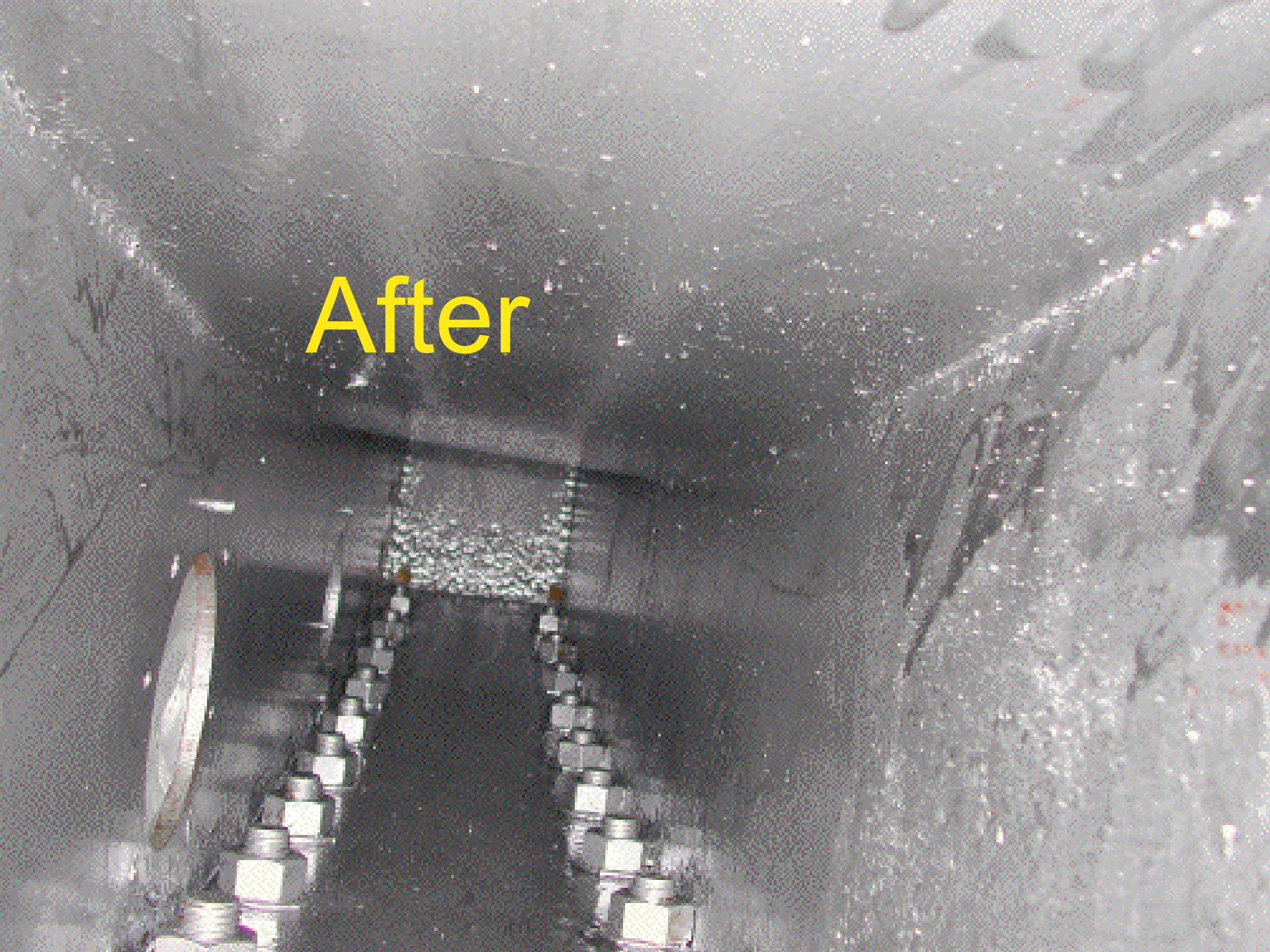
January 2002
Shutdown



Before



After



The next step: Sep 2002



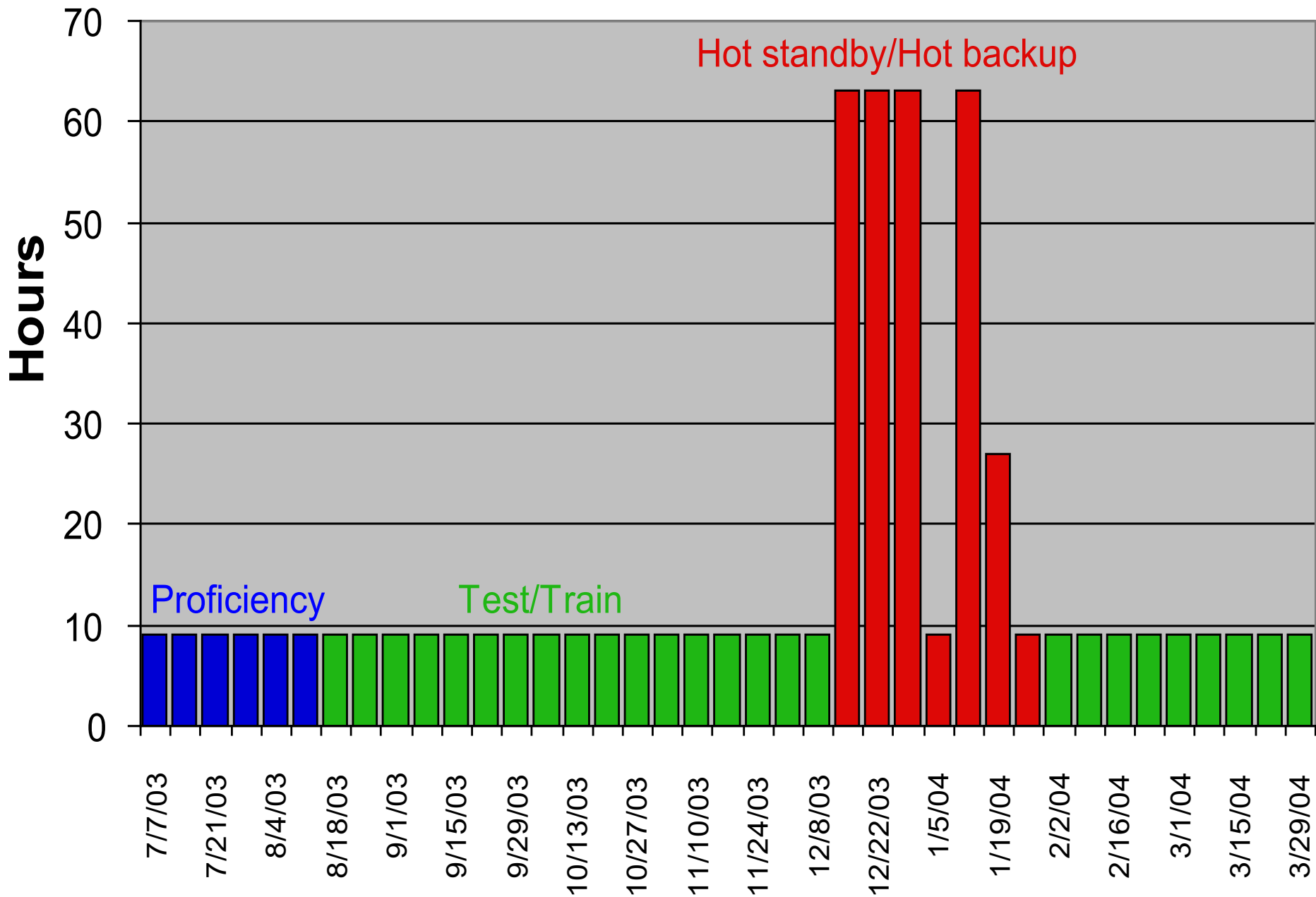
Antenna maintenance

- Replace rack bolts (Jan 2002)
- Replace Zenith gearboxes (Sep 2002?)

JPL tracking contract

- Extension of perforated panels: 44 → 54m
(wind loading?)
- New/upgraded X-band receiver
- Mars tracking (Jul 03 - Mar 04)

Mars tracking



Operational issues

- ~1 day for 10/50cm receiver installation/removal
- 10/50cm + MB fill translator
- Future maintenance of MB (~1 month)
- Pulsar timing through Mars tracking with new 10/50cm receiver not possible

Other issues

- SETI receiver – return from Green Bank
- Baseline ripple – translator “dither” solution

Parke's Visitors Centre

- 125,000 visitors for 2001

